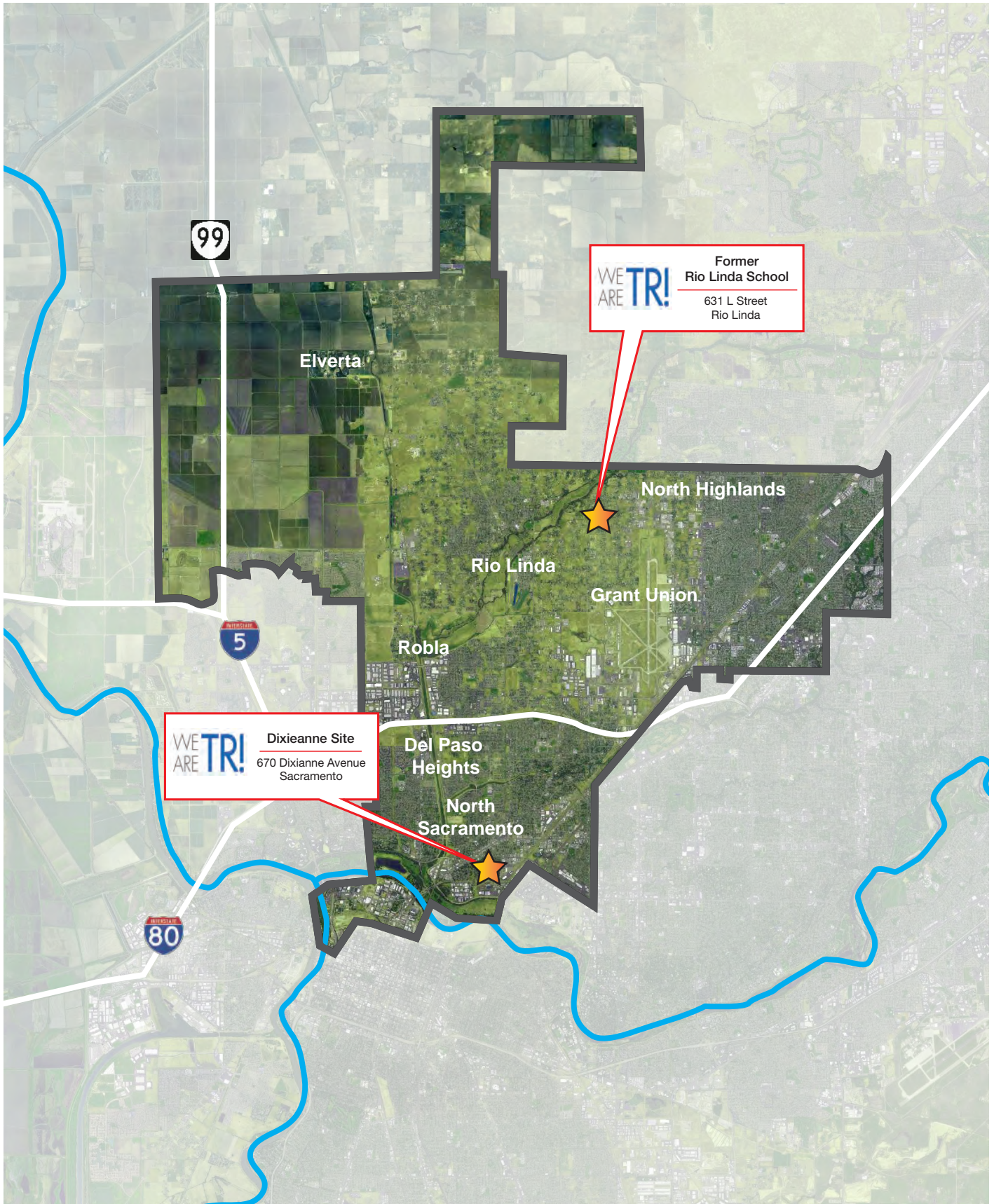


Section Nine
OTHER FACILITIES



This page intentionally left blank.



FORMER RIO LINDA SCHOOL (CLOSED SITE)

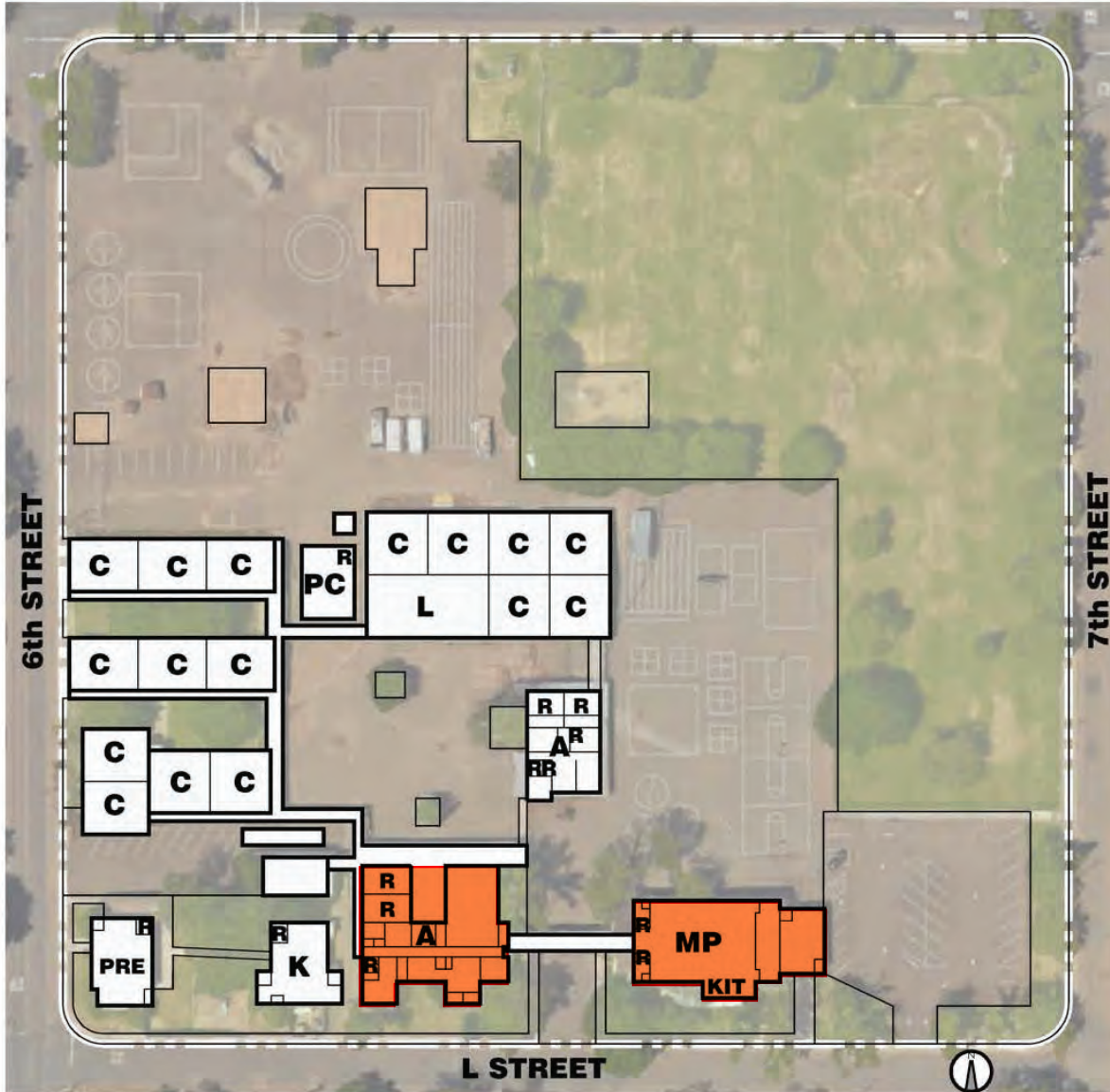


Rio Linda

ADMIN + MPR BLDG.
ASSESSMENT

FORMER RIO LINDA SCHOOL (CLOSED SITE)

SITE PLAN - EXISTING



ABBREVIATIONS:

- A ADMINISTRATION
- C CLASSROOM
- K KINDERGARTEN
- KIT KITCHEN
- MP MULTI-PURPOSE
- L LIBRARY
- PC PORTABLE CLASSROOM
- PR PORTABLE RESTROOM
- PRE PRE SCHOOL
- R RESTROOM

SCALE 1" = 80'

SCOPE	
EXISTING BLDG. - NO WORK	
MODERNIZATION	
BUILDING EXPANSION	
NEW BUILDINGS	



FORMER RIO LINDA SCHOOL (CLOSED SITE)

Facility Totals

All cost estimates are in 2021 dollars and include total soft costs. Inflation values are based on priority assigned. Items marked as complete are shown with their final dollar value at time of completion.

Priority	Total Cost
Priority 1	\$0
Priority 2	\$0
Priority 3	\$0
Priority 4	\$5,899,221
Priority IP	\$0
Priority C	\$1,352,259
Total	\$7,251,480

Discipline	Priority 1	Priority 2	Priority 3	Priority 4	Priority IP	Priority C	Total Cost
Civil	\$0	\$0	\$0	\$0	\$0	\$0	\$0
Building Envelope	\$0	\$0	\$0	\$0	\$0	\$0	\$0
Architectural	\$0	\$0	\$0	\$5,899,221	\$0	\$27,266	\$5,926,487
Mechanical	\$0	\$0	\$0	\$0	\$0	\$0	\$0
Electrical	\$0	\$0	\$0	\$0	\$0	\$0	\$0
Plumbing	\$0	\$0	\$0	\$0	\$0	\$0	\$0
Technology	\$0	\$0	\$0	\$0	\$0	\$0	\$0
Fire & Life Safety	\$0	\$0	\$0	\$0	\$0	\$0	\$0
Security	\$0	\$0	\$0	\$0	\$0	\$0	\$0
Athletics/Activities	\$0	\$0	\$0	\$0	\$0	\$0	\$0
Nutrition Services	\$0	\$0	\$0	\$0	\$0	\$0	\$0
Other	\$0	\$0	\$0	\$0	\$0	\$1,324,993	\$1,324,993
Discipline Totals	\$0	\$0	\$0	\$5,899,221	\$0	\$1,352,259	\$7,251,480

P1 Total	\$0
P1 + P2 Total	\$0
P1 + P2 + P3 Total	\$0
P1 + P2 + P3 + P4 Total	\$5,899,221
In Progress (IP) Total	\$0
Complete (C) Total	\$1,352,259
IP + C Totals	\$1,352,259

FORMER RIO LINDA SCHOOL (CLOSED SITE)

Proposed Work Items

All cost estimates are in 2021 dollars and include total soft costs. Inflation values are based on priority assigned. Items marked as complete are shown with their final dollar value at time of completion.

ITEM NO.	ITEM DESCRIPTION	PRIORITY CODE	SOURCE CODE	CLASSIFICATION CODE	TOTAL COST
ARCHITECTURE					\$5,926,487
5329	Administration and MPR Modernization.	4	FRP	ADD2	\$5,899,221
5332	RIO LINDA PRE-K ROOM 20 UPGRADES (044-16-554)	C	2017U	REN15-16	\$27,266
OTHER					\$1,324,993
5333	RIO LINDA ES PRESCHOOL (006-14-554)	C	2017U	OTH14-15	\$180,597
5334	RIO LINDA POLICE ANNEX (051-15-671)	C	2017U	OTH14-15	\$33,568
5335	RIO LINDA ES - SAC PUBLIC LIBRARY (004-12-671)	C	2017U	OTH16-17	\$1,110,828

PRIORITY CODE	PRIORITY DESCRIPTION	TOTAL
1	Must Do: Legal, Safety Reasons of Critical Replacements (Life Expectancy 1-5 years)	\$0
2	Should Do: Curricular, Instructional, Program Need - (Life Expectancy 6-15 years)	\$0
3	Would Like To Do: Curricular, Instructional, Program Enhancement (Life Expectancy 16-20 years)	\$0
4	Future Consideration (Life Expectancy 21-25 years)	\$5,899,221
IP	In Progress Scope of Work (Life Expectancy 0 years)	\$0
C	Complete Scope of Work (Life Expectancy 0 years)	\$1,352,259
		\$7,251,480



DIXIEANNE CAMPUS (CLOSED SITE)

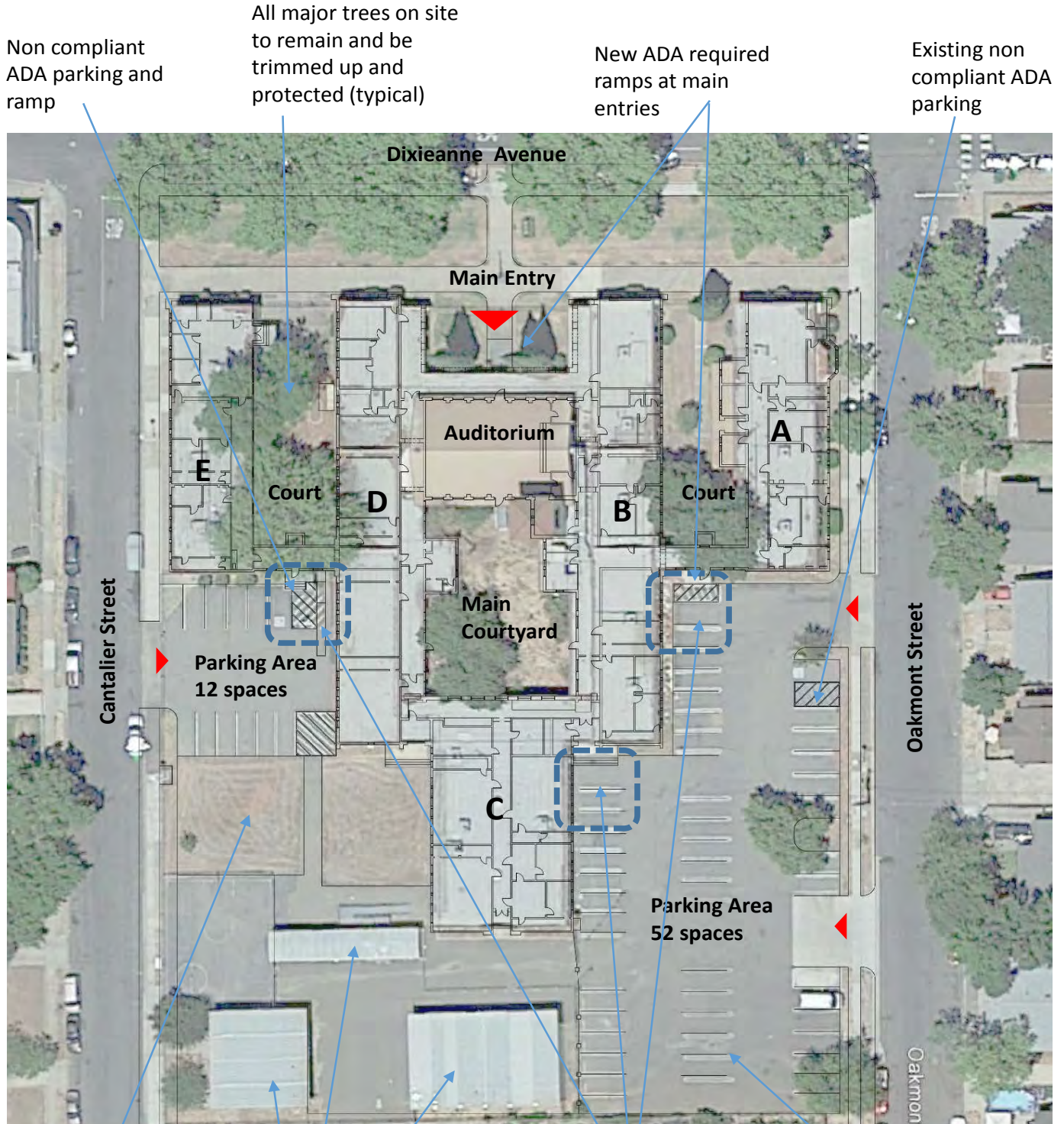
Facilities Assessment Report - FINAL

Dixieanne Campus \ Sacramento, California \ March 2017



DIXIEANNE CAMPUS (CLOSED SITE)

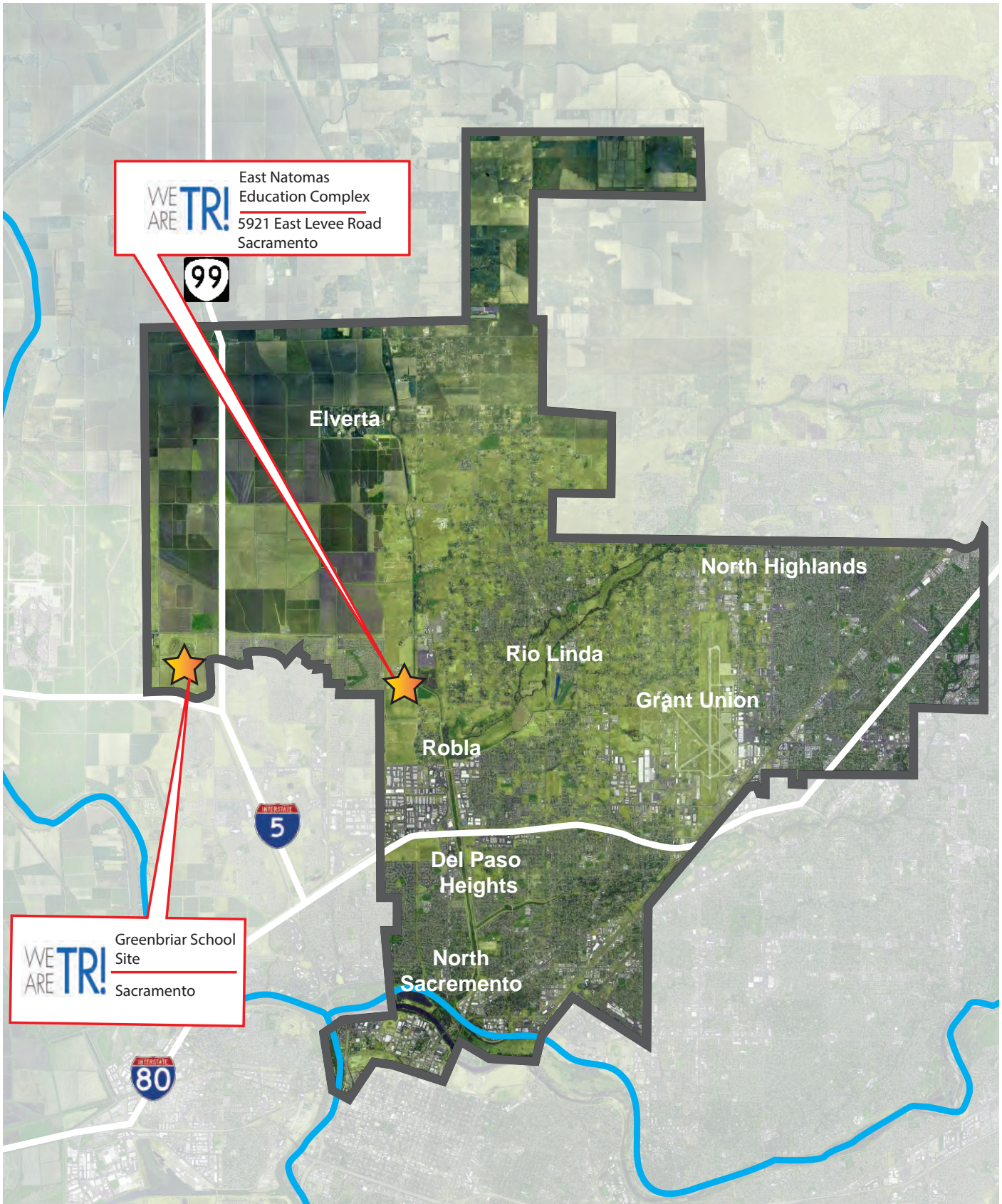
SITE PLAN - EXISTING



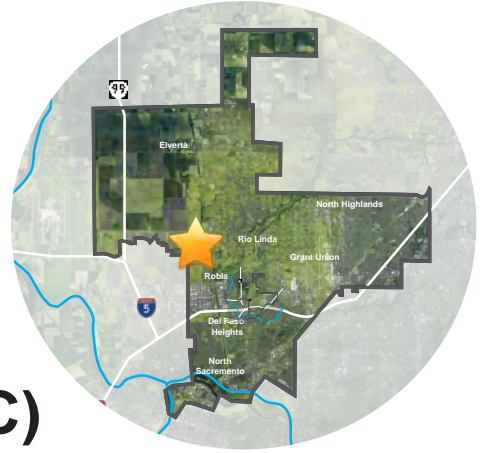


Section Ten

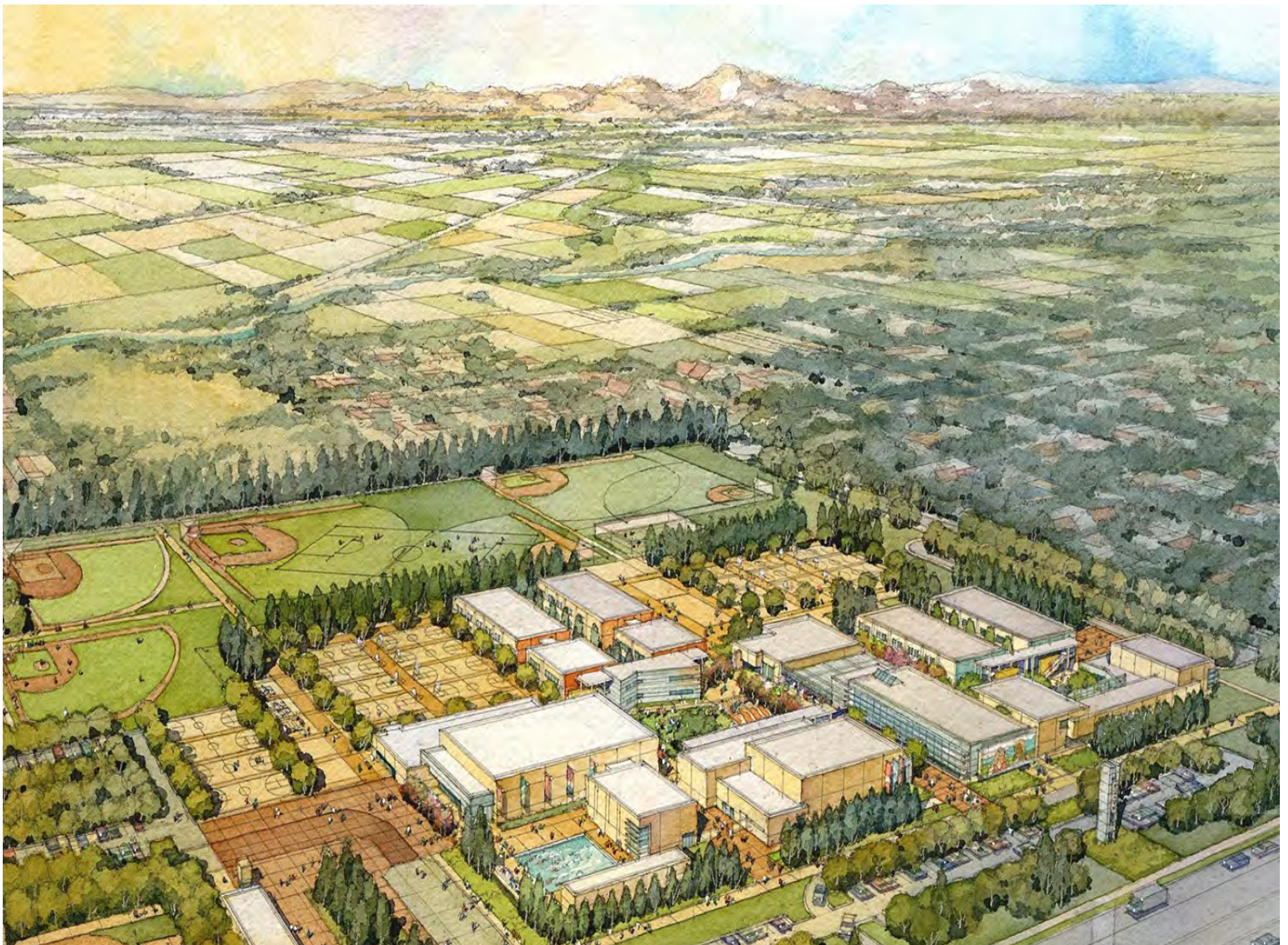
DISTRICT-WIDE SPECIAL PROJECTS



This page intentionally left blank.



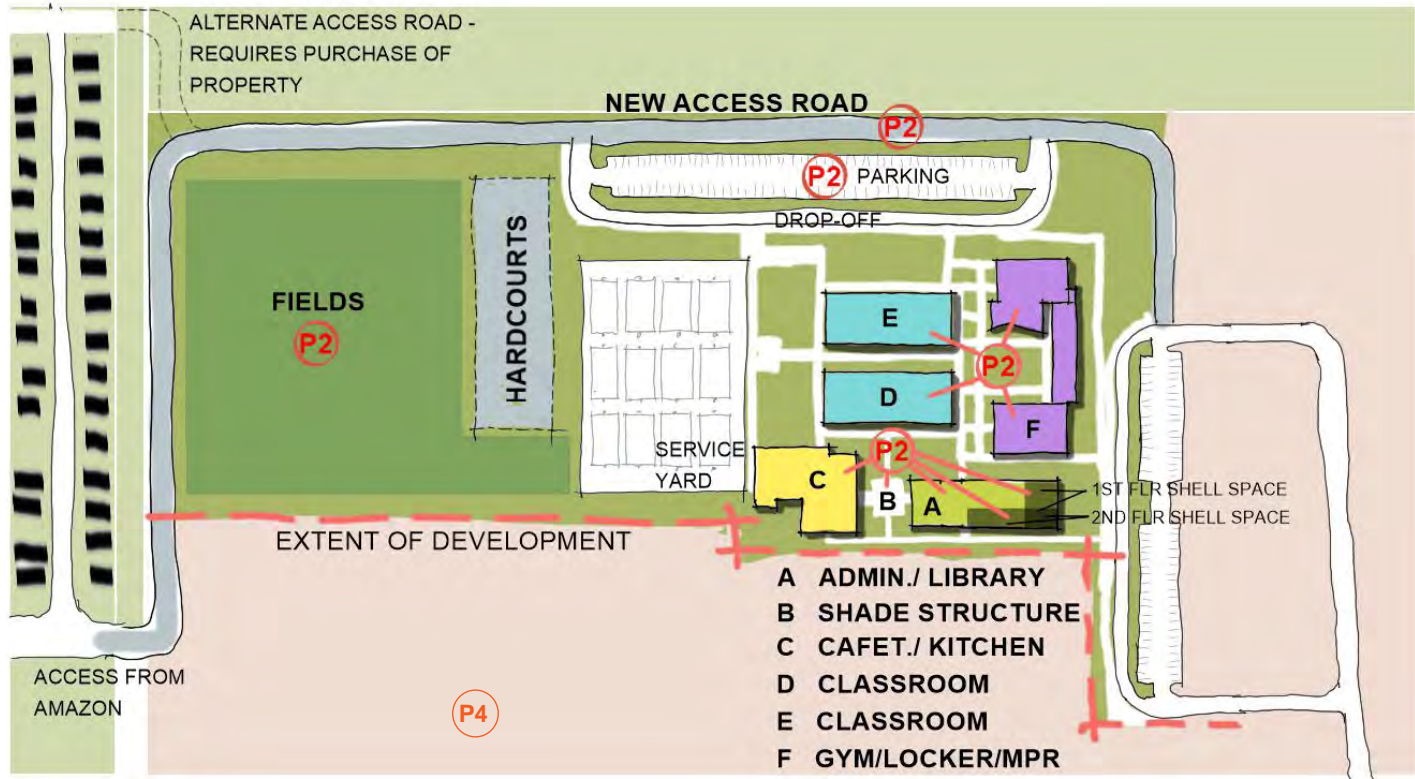
EAST NATOMAS EDUCATION COMPLEX (ENEC)



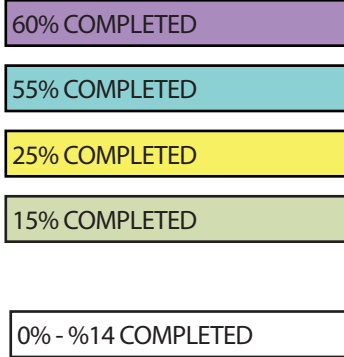
5921 EAST LEVEE ROAD
SACRAMENTO, CALIFORNIA 95834

PROPOSED SITE DEVELOPMENT PLAN

The plan to develop the north side of the site for use as a new campus is based on existing construction already completed.



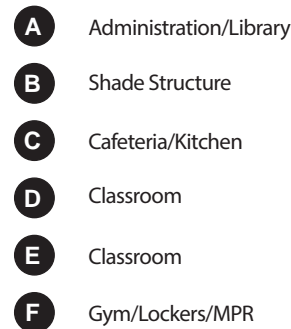
PRIORITY KEYNOTES



PRIORITY KEYNOTES



BUILDING LEGEND





EAST NATOMAS EDUCATION COMPLEX (ENEC)

Facility Totals

All cost estimates are in 2021 dollars and include total soft costs. Inflation values are based on priority assigned. Items marked as complete are shown with their final dollar value at time of completion.vvv

Priority	Total Cost
Priority 1	\$0
Priority 2	\$89,891,357
Priority 3	\$0
Priority 4	\$165,139,475
Priority IP	-\$194,413
Priority C	\$135,373
Total	\$254,971,792

DISCIPLINE	PRIORITY 1	PRIORITY 2	PRIORITY 3	PRIORITY 4	PRIORITY IP	PRIORITY C	TOTAL COST
Civil	\$0	\$0	\$0	\$0	\$0	\$0	\$0
Building Envelope	\$0	\$0	\$0	\$0	\$0	\$0	\$0
Architectural	\$0	\$89,891,357	\$0	\$149,500,198	-\$194,413	\$0	\$239,197,142
Mechanical	\$0	\$0	\$0	\$0	\$0	\$0	\$0
Electrical	\$0	\$0	\$0	\$0	\$0	\$0	\$0
Plumbing	\$0	\$0	\$0	\$0	\$0	\$0	\$0
Technology	\$0	\$0	\$0	\$0	\$0	\$0	\$0
Fire & Life Safety	\$0	\$0	\$0	\$0	\$0	\$0	\$0
Security	\$0	\$0	\$0	\$0	\$0	\$135,373	\$135,373
Athletics/Activities	\$0	\$0	\$0	\$15,639,278	\$0	\$0	\$15,639,278
Nutrition Services	\$0	\$0	\$0	\$0	\$0	\$0	\$0
Other	\$0	\$0	\$0	\$0	\$0	\$0	\$0
Discipline Totals	\$0	\$89,891,357	\$0	\$165,139,475	-\$194,413	\$135,373	\$254,971,792

P1 Total	\$0
P1 + P2 Total	\$89,891,357
P1 + P2 + P3	\$89,891,357
P1 + P2 + P3 + P4 Total	\$255,030,833
In Progress (IP) Total	-\$194,413
Complete (C) Total	\$135,373
IP + C Totals	-\$59,040

EAST NATOMAS EDUCATION COMPLEX (ENEC)

Proposed Work Items

All cost estimates are in 2021 dollars and include total soft costs. Inflation values are based on priority assigned. Items marked as complete are shown with their final dollar value at time of completion.vvv

ITEM NO.	ITEM DESCRIPTION	PRIORITY CODE	SOURCE CODE	CLASSIFICATION CODE	TOTAL COST
ARCHITECTURE					\$239,197,142
5291	Building A - Administration/Library.	2	FRP	ADD	\$17,997,066
5292	Building C - Nutrition Services.	2	FRP	ADD	\$11,586,094
5293	Building D - Classroom Wings.	2	FRP	ADD	\$15,546,221
5294	Building E - Classroom Wings.	2	FRP	ADD	\$15,546,221
5295	Building F - Administration, P.E. and MPR.	2	FRP	ADD	\$13,574,530
5296	Buildings A - F - Site Improvements and Access Road.	2	FRP	ADD	\$15,641,227
5297	Building G - Theater/Performing Arts.	4	FRP	ADD	\$27,853,901
5298	Building H - Admin/Specialty Classrooms.	4	FRP	ADD	\$27,294,536
5299	Building J - Classrooms.	4	FRP	ADD	\$22,223,240
5300	Building K - Classrooms.	4	FRP	ADD	\$22,223,240
5301	Building L - Classrooms.	4	FRP	ADD	\$2,377,170
5302	Building N - PE Main Gym.	4	FRP	ADD	\$31,672,143
5303	Building P - PE MP Gym.	4	FRP	ADD	\$5,369,485
5304	Building Q - Stadium Fieldhouse.	4	FRP	ADD	\$2,330,600
5305	Buildings G - Q - Site Development.	4	FRP	ADD	\$6,081,941
5312	Building M - PE Pool Building.	4	FRP	POOLN	\$2,073,942
5313	ENEC SOFT COSTS (070-09-715), 14-15FY	IP	2017U	OTH14-15	-\$90,112
5314	ENEC SOFT COSTS (070-09-715), 15-16FY	IP	2017U	OTH15-16	-\$41,152
5315	ENEC SOFT COSTS (070-09-715), 16-17FY	IP	2017U	OTH16-17	-\$63,149
SECURITY					\$135,373
6352	ENEC FENCING [Completed 2020]	C	2021U	SEC	\$120,388
5328	ENEC SECURITY SYSTEM (095-16-715)	C	2017U	SEC15-16	\$14,985
ATHLETICS/ACTIVITIES					\$15,639,278
5316	Buildings G - Q - New Stadium.	4	FRP	ADD	\$9,557,336
5317	Buildings G - Q - New Pool.	4	FRP	POOLN	\$6,081,941



EAST NATOMAS EDUCATION COMPLEX (ENEC)

Proposed Work Items

All cost estimates are in 2021 dollars and include total soft costs. Inflation values are based on priority assigned. Items marked as complete are shown with their final dollar value at time of completion.vvv

PRIORITY CODE	PRIORITY DESCRIPTION	TOTAL
1	Must Do: Legal, Safety Reasons of Critical Replacements (Life Expectancy 1-5 years)	\$0
2	Should Do: Curricular, Instructional, Program Need - (Life Expectancy 6-15 years)	\$89,891,357
3	Would Like To Do: Curricular, Instructional, Program Enhancement (Life Expectancy 16-20 years)	\$0
4	Future Consideration (Life Expectancy 21-25 years)	\$165,139,475
IP	In Progress Scope of Work (Life Expectancy 0 years)	(\$194,413)
C	Complete Scope of Work (Life Expectancy 0 years)	\$135,373
		\$254,971,792

This page intentionally left blank.



DISTRICT-WIDE REPAIRS/ REPLACEMENTS

Facility Totals

All cost estimates are in 2021 dollars and include total soft costs. Inflation values are based on priority assigned. Items marked as complete are shown with their final dollar value at time of completion.

Priority	Total Cost
Priority 1	\$0
Priority 2	\$0
Priority 3	\$0
Priority 4	\$0
Priority IP	\$0
Priority C	\$20,751
Total	\$20,751

Discipline	Priority 1	Priority 2	Priority 3	Priority 4	Priority IP	Priority C	Total Cost
Civil	\$0	\$0	\$0	\$0	\$0	\$0	\$0
Building Envelope	\$0	\$0	\$0	\$0	\$0	\$0	\$0
Architectural	\$0	\$0	\$0	\$0	\$0	\$0	\$0
Mechanical	\$0	\$0	\$0	\$0	\$0	\$20,751	\$20,751
Electrical	\$0	\$0	\$0	\$0	\$0	\$0	\$0
Plumbing	\$0	\$0	\$0	\$0	\$0	\$0	\$0
Technology	\$0	\$0	\$0	\$0	\$0	\$0	\$0
Fire & Life Safety	\$0	\$0	\$0	\$0	\$0	\$0	\$0
Security	\$0	\$0	\$0	\$0	\$0	\$0	\$0
Athletics/Activities	\$0	\$0	\$0	\$0	\$0	\$0	\$0
Nutrition Services	\$0	\$0	\$0	\$0	\$0	\$0	\$0
Other	\$0	\$0	\$0	\$0	\$0	\$0	\$0
Discipline Totals	\$0	\$0	\$0	\$0	\$0	\$20,751	\$20,751

P1 Total	\$0
P1 + P2 Total	\$0
P1 + P2 + P3 Total	\$0
P1 + P2 + P3 + P4 Total	\$0
In Progress (IP) Total	\$0
Complete (C) Total	\$20,751
IP + C Totals	\$20,751

DISTRICT-WIDE REPAIRS/REPLACEMENTS (2013-2014)

Proposed Work Items

All cost estimates are in 2021 dollars and include total soft costs. Inflation values are based on priority assigned. Items marked as complete are shown with their final dollar value at time of completion.

ITEM NO.	ITEM DESCRIPTION	PRIORITY CODE	SOURCE CODE	CLASSIFICATION CODE	TOTAL COST
MECHANICAL					\$20,751
5280	DISTRICTWIDE 13/14 HVAC REPAIRS/CHANGEOUTS	C	2017U	HVAC14-15	\$20,751

PRIORITY CODE	PRIORITY DESCRIPTION	TOTAL
1	Must Do: Legal, Safety Reasons of Critical Replacements (Life Expectancy 1-5 years)	\$0
2	Should Do: Curricular, Instructional, Program Need - (Life Expectancy 6-15 years)	\$0
3	Would Like To Do: Curricular, Instructional, Program Enhancement (Life Expectancy 16-20 years)	\$0
4	Future Consideration (Life Expectancy 21-25 years)	\$0
IP	In Progress Scope of Work (Life Expectancy 0 years)	\$0
C	Complete Scope of Work (Life Expectancy 0 years)	\$20,751
		\$20,751



DISTRICT-WIDE REPAIRS/REPLACEMENTS (2014-2015)

Facility Totals

All cost estimates are in 2021 dollars and include total soft costs. Inflation values are based on priority assigned. Items marked as complete are shown with their final dollar value at time of completion.

Priority	Total Cost
Priority 1	\$0
Priority 2	\$0
Priority 3	\$0
Priority 4	\$0
Priority IP	\$0
Priority C	\$956,415
Total	\$956,415

Discipline	Priority 1	Priority 2	Priority 3	Priority 4	Priority IP	Priority C	Total Cost
Civil	\$0	\$0	\$0	\$0	\$0	\$0	\$0
Building Envelope	\$0	\$0	\$0	\$0	\$0	\$0	\$0
Architectural	\$0	\$0	\$0	\$0	\$0	\$109,156	\$109,156
Mechanical	\$0	\$0	\$0	\$0	\$0	\$277,246	\$277,246
Electrical	\$0	\$0	\$0	\$0	\$0	\$0	\$0
Plumbing	\$0	\$0	\$0	\$0	\$0	\$0	\$0
Technology	\$0	\$0	\$0	\$0	\$0	\$0	\$0
Fire & Life Safety	\$0	\$0	\$0	\$0	\$0	\$0	\$0
Security	\$0	\$0	\$0	\$0	\$0	\$0	\$0
Athletics/Activities	\$0	\$0	\$0	\$0	\$0	\$0	\$0
Nutrition Services	\$0	\$0	\$0	\$0	\$0	\$0	\$0
Other	\$0	\$0	\$0	\$0	\$0	\$570,012	\$570,012
Discipline Totals	\$0	\$0	\$0	\$0	\$0	\$956,415	\$956,415

P1 Total	\$0
P1 + P2 Total	\$0
P1 + P2 + P3 Total	\$0
P1 + P2 + P3 + P4 Total	\$0
In Progress (IP) Total	\$0
Complete (C) Total	\$956,415
IP + C Totals	\$956,415

DISTRICT-WIDE REPAIRS/REPLACEMENTS (2014-2015)

Proposed Work Items

All cost estimates are in 2021 dollars and include total soft costs. Inflation values are based on priority assigned. Items marked as complete are shown with their final dollar value at time of completion.

ITEM NO.	ITEM DESCRIPTION	PRIORITY CODE	SOURCE CODE	CLASSIFICATION CODE	TOTAL COST
ARCHITECTURE					\$109,156
5281	DISTRICTWIDE FOUNTAIN REPLACEMENTS (055-15-270)	C	2017U	EDF14-15	\$88,314
5282	DISTRICTWIDE FLOORING REPLACEMENT (011-15-000)	C	2017U	FLR14-15	\$20,842
MECHANICAL					\$277,246
5283	14/15 DISTRICTWIDE HVAC REPAIRS/CHANGEOUTS (018-15-270)	C	2017U	HVAC14-15	\$277,246
OTHER					\$570,012
5284	FACILITIES 14/15 FAC NEEDS & SUPPLEMENTAL SUPPORT (049-15-160)	C	2017U	OTH14-15	\$260,012
5285	FACILITIES MASTER PLAN (053-15-160) 14-15/15-16	C	2017U	OTH15-16	\$310,000

PRIORITY CODE	PRIORITY DESCRIPTION	TOTAL
1	Must Do: Legal, Safety Reasons of Critical Replacements (Life Expectancy 1-5 years)	\$0
2	Should Do: Curricular, Instructional, Program Need - (Life Expectancy 6-15 years)	\$0
3	Would Like To Do: Curricular, Instructional, Program Enhancement (Life Expectancy 16-20 years)	\$0
4	Future Consideration (Life Expectancy 21-25 years)	\$0
IP	In Progress Scope of Work (Life Expectancy 0 years)	\$0
C	Complete Scope of Work (Life Expectancy 0 years)	\$956,415
		\$956,415



DISTRICT-WIDE REPAIRS/REPLACEMENTS (2015-2016)

Facility Totals

All cost estimates are in 2021 dollars and include total soft costs. Inflation values are based on priority assigned. Items marked as complete are shown with their final dollar value at time of completion.

Priority	Total Cost
Priority 1	\$0
Priority 2	\$0
Priority 3	\$0
Priority 4	\$0
Priority IP	\$6,338
Priority C	\$320,641
Total	\$326,979

Discipline	Priority 1	Priority 2	Priority 3	Priority 4	Priority IP	Priority C	Total Cost
Civil	\$0	\$0	\$0	\$0	\$0	\$0	\$0
Building Envelope	\$0	\$0	\$0	\$0	\$0	\$0	\$0
Architectural	\$0	\$0	\$0	\$0	\$0	\$0	\$0
Mechanical	\$0	\$0	\$0	\$0	\$0	\$0	\$0
Electrical	\$0	\$0	\$0	\$0	\$0	\$0	\$0
Plumbing	\$0	\$0	\$0	\$0	\$0	\$0	\$0
Technology	\$0	\$0	\$0	\$0	\$0	\$0	\$0
Fire & Life Safety	\$0	\$0	\$0	\$0	\$0	\$0	\$0
Security	\$0	\$0	\$0	\$0	\$0	\$0	\$0
Athletics/Activities	\$0	\$0	\$0	\$0	\$6,338	\$0	\$6,338
Nutrition Services	\$0	\$0	\$0	\$0	\$0	\$0	\$0
Other	\$0	\$0	\$0	\$0	\$0	\$320,641	\$320,641
Discipline Totals	\$0	\$0	\$0	\$0	\$6,338	\$320,641	\$326,979

P1 Total	\$0
P1 + P2 Total	\$0
P1 + P2 + P3 Total	\$0
P1 + P2 + P3 + P4 Total	\$0
In Progress (IP) Total	\$6,338
Complete (C) Total	\$320,641
IP + C Totals	\$326,979

DISTRICT-WIDE REPAIRS/REPLACEMENTS (2015-2016)

Proposed Work Items

All cost estimates are in 2021 dollars and include total soft costs. Inflation values are based on priority assigned. Items marked as complete are shown with their final dollar value at time of completion.

ITEM NO.	ITEM DESCRIPTION	PRIORITY CODE	SOURCE CODE	CLASSIFICATION CODE	TOTAL COST
ATHLETICS/ACTIVITIES					\$6,338
5286	DW BATTING CAGES ARTIFICIAL TURF (FHS, GHS, HHS, RLHS) (181-16-000)	IP	2017U	AF15-16	\$6,338
OTHER					\$320,641
5287	15/16 FACILITIES NEEDS & SUPPLEMENTAL PROJECT SUPPORT (182-16-160)	C	2017U	OTH15-16	\$299,152
5288	BEN ALI JOINT USE PARK (025-09-553)	C	2017U	OTH16-17	\$21,489

PRIORITY CODE	PRIORITY DESCRIPTION	TOTAL
1	Must Do: Legal, Safety Reasons of Critical Replacements (Life Expectancy 1-5 years)	\$0
2	Should Do: Curricular, Instructional, Program Need - (Life Expectancy 6-15 years)	\$0
3	Would Like To Do: Curricular, Instructional, Program Enhancement (Life Expectancy 16-20 years)	\$0
4	Future Consideration (Life Expectancy 21-25 years)	\$0
IP	In Progress Scope of Work (Life Expectancy 0 years)	\$6,338
C	Complete Scope of Work (Life Expectancy 0 years)	\$320,641
		\$326,979



DISTRICT-WIDE REPAIRS/REPLACEMENTS (2016-2017)

Facility Totals

All cost estimates are in 2021 dollars and include total soft costs. Inflation values are based on priority assigned. Items marked as complete are shown with their final dollar value at time of completion.

Priority	Total Cost
Priority 1	\$0
Priority 2	\$0
Priority 3	\$0
Priority 4	\$0
Priority IP	\$0
Priority C	\$486,717
Total	\$486,717

Discipline	Priority 1	Priority 2	Priority 3	Priority 4	Priority IP	Priority C	Total Cost
Civil	\$0	\$0	\$0	\$0	\$0	\$0	\$0
Building Envelope	\$0	\$0	\$0	\$0	\$0	\$0	\$0
Architectural	\$0	\$0	\$0	\$0	\$0	\$0	\$0
Mechanical	\$0	\$0	\$0	\$0	\$0	\$0	\$0
Electrical	\$0	\$0	\$0	\$0	\$0	\$0	\$0
Plumbing	\$0	\$0	\$0	\$0	\$0	\$0	\$0
Technology	\$0	\$0	\$0	\$0	\$0	\$26,867	\$26,867
Fire & Life Safety	\$0	\$0	\$0	\$0	\$0	\$0	\$0
Security	\$0	\$0	\$0	\$0	\$0	\$0	\$0
Athletics/Activities	\$0	\$0	\$0	\$0	\$0	\$0	\$0
Nutrition Services	\$0	\$0	\$0	\$0	\$0	\$0	\$0
Other	\$0	\$0	\$0	\$0	\$0	\$459,849	\$459,849
Discipline Totals	\$0	\$0	\$0	\$0	\$0	\$486,717	\$486,717

P1 Total	\$0
P1 + P2 Total	\$0
P1 + P2 + P3 Total	\$0
P1 + P2 + P3 + P4 Total	\$0
In Progress (IP) Total	\$0
Complete (C) Total	\$486,717
IP + C Totals	\$486,717

DISTRICT-WIDE REPAIRS/REPLACEMENTS (2016-2017)

Proposed Work Items

All cost estimates are in 2021 dollars and include total soft costs. Inflation values are based on priority assigned. Items marked as complete are shown with their final dollar value at time of completion.

ITEM NO.	ITEM DESCRIPTION	PRIORITY CODE	SOURCE CODE	CLASSIFICATION CODE	TOTAL COST
TECHNOLOGY					\$26,867
5290	DISTRICTWIDE CABLING (149-16-180)	C	2017U	TECH16-17	\$26,867
OTHER					\$459,849
5289	16/17 FACILITIES NEEDS & SUPPLEMENTAL PROJECT SUPPORT (125-17-160)	C	2017U	OTH16-17	\$459,849

PRIORITY CODE	PRIORITY DESCRIPTION	TOTAL
1	Must Do: Legal, Safety Reasons of Critical Replacements (Life Expectancy 1-5 years)	\$0
2	Should Do: Curricular, Instructional, Program Need - (Life Expectancy 6-15 years)	\$0
3	Would Like To Do: Curricular, Instructional, Program Enhancement (Life Expectancy 16-20 years)	\$0
4	Future Consideration (Life Expectancy 21-25 years)	\$0
IP	In Progress Scope of Work (Life Expectancy 0 years)	\$0
C	Complete Scope of Work (Life Expectancy 0 years)	\$486,717
		\$486,717



DISTRICT-WIDE REPAIRS/REPLACEMENTS (2018-2019)

Facility Totals

All cost estimates are in 2021 dollars and include total soft costs. Inflation values are based on priority assigned. Items marked as complete are shown with their final dollar value at time of completion.

Priority	Total Cost
Priority 1	\$0
Priority 2	\$0
Priority 3	\$0
Priority 4	\$0
Priority IP	\$0
Priority C	\$1,314,716
Total	\$1,314,716

Discipline	Priority 1	Priority 2	Priority 3	Priority 4	Priority IP	Priority C	Total Cost
Civil	\$0	\$0	\$0	\$0	\$0	\$0	\$0
Building Envelope	\$0	\$0	\$0	\$0	\$0	\$0	\$0
Architectural	\$0	\$0	\$0	\$0	\$0	\$0	\$0
Mechanical	\$0	\$0	\$0	\$0	\$0	\$0	\$0
Electrical	\$0	\$0	\$0	\$0	\$0	\$0	\$0
Plumbing	\$0	\$0	\$0	\$0	\$0	\$0	\$0
Technology	\$0	\$0	\$0	\$0	\$0	\$0	\$0
Fire & Life Safety	\$0	\$0	\$0	\$0	\$0	\$0	\$0
Security	\$0	\$0	\$0	\$0	\$0	\$1,314,716	\$1,314,716
Athletics/Activities	\$0	\$0	\$0	\$0	\$0	\$0	\$0
Nutrition Services	\$0	\$0	\$0	\$0	\$0	\$0	\$0
Other	\$0	\$0	\$0	\$0	\$0	\$0	\$0
Discipline Totals	\$0	\$0	\$0	\$0	\$0	\$1,314,716	\$1,314,716

P1 Total	\$0
P1 + P2 Total	\$0
P1 + P2 + P3 Total	\$0
P1 + P2 + P3 + P4 Total	\$0
In Progress (IP) Total	\$0
Complete (C) Total	\$1,314,716
IP + C Totals	\$1,314,716

DISTRICT-WIDE REPAIRS/REPLACEMENTS (2018-2019)

Proposed Work Items

All cost estimates are in 2021 dollars and include total soft costs. Inflation values are based on priority assigned. Items marked as complete are shown with their final dollar value at time of completion.

ITEM NO.	ITEM DESCRIPTION	PRIORITY CODE	SOURCE CODE	CLASSIFICATION CODE	TOTAL COST
SECURITY					\$1,314,716
6353	SHORETEL PHONE SYSTEM	C	2021U	SEC18-19	\$1,314,716

PRIORITY CODE	PRIORITY DESCRIPTION	TOTAL
1	Must Do: Legal, Safety Reasons of Critical Replacements (Life Expectancy 1-5 years)	\$0
2	Should Do: Curricular, Instructional, Program Need - (Life Expectancy 6-15 years)	\$0
3	Would Like To Do: Curricular, Instructional, Program Enhancement (Life Expectancy 16-20 years)	\$0
4	Future Consideration (Life Expectancy 21-25 years)	\$0
IP	In Progress Scope of Work (Life Expectancy 0 years)	\$0
C	Complete Scope of Work (Life Expectancy 0 years)	\$1,314,716
		\$1,314,716

PROPOSED NEW FACILITIES



This page intentionally left blank.



NORTHLAKE ELEMENTARY SCHOOL

Facility Totals

All cost estimates are in 2021 dollars and include total soft costs. Inflation values are based on priority assigned. Items marked as complete are shown with their final dollar value at time of completion.

Priority	Total Cost
Priority 1	\$0
Priority 2	\$0
Priority 3	\$0
Priority 4	\$0
Priority IP	\$79,445,550
Priority C	\$0
Total	\$79,445,550

DISCIPLINE	PRIORITY 1	PRIORITY 2	PRIORITY 3	PRIORITY 4	PRIORITY IP	PRIORITY C	TOTAL COST
Civil	\$0	\$0	\$0	\$0	\$0	\$0	\$0
Building Envelope	\$0	\$0	\$0	\$0	\$0	\$0	\$0
Architectural	\$0	\$0	\$0	\$0	\$79,406,250	\$0	\$79,406,250
Mechanical	\$0	\$0	\$0	\$0	\$0	\$0	\$0
Electrical	\$0	\$0	\$0	\$0	\$0	\$0	\$0
Plumbing	\$0	\$0	\$0	\$0	\$0	\$0	\$0
Technology	\$0	\$0	\$0	\$0	\$0	\$0	\$0
Fire & Life Safety	\$0	\$0	\$0	\$0	\$0	\$0	\$0
Security	\$0	\$0	\$0	\$0	\$0	\$0	\$0
Athletics/Activities	\$0	\$0	\$0	\$0	\$0	\$0	\$0
Nutrition Services	\$0	\$0	\$0	\$0	\$0	\$0	\$0
Other	\$0	\$0	\$0	\$0	\$39,300	\$0	\$39,300
Discipline Totals	\$0	\$0	\$0	\$0	\$79,445,550	\$0	\$79,445,550

P1 Total	\$0
P1 + P2 Total	\$0
P1 + P2 + P3	\$0
P1 + P2 + P3 + P4 Total	\$0
In Progress (IP) Total	\$79,445,550
Complete (C) Total	\$0
IP + C Totals	\$79,445,550

NORTHLAKE ELEMENTARY SCHOOL

Proposed Work Items

All cost estimates are in 2021 dollars and include total soft costs. Inflation values are based on priority assigned. Items marked as complete are shown with their final dollar value at time of completion.

ITEM NO.	ITEM DESCRIPTION	PRIORITY CODE	SOURCE CODE	CLASSIFICATION CODE	TOTAL COST
ARCHITECTURE					\$79,406,250
5513	New K-8 Elementary School.	IP	2021U	ADD	\$79,406,250
OTHER					\$39,300
5514	GREENBRIAR (NEW)	IP	2017U	OTH15-16	\$39,300

PRIORITY CODE	PRIORITY DESCRIPTION	TOTAL
1	Must Do: Legal, Safety Reasons of Critical Replacements (Life Expectancy 1-5 years)	\$0
2	Should Do: Curricular, Instructional, Program Need - (Life Expectancy 6-15 years)	\$0
3	Would Like To Do: Curricular, Instructional, Program Enhancement (Life Expectancy 16-20 years)	\$0
4	Future Consideration (Life Expectancy 21-25 years)	\$0
IP	In Progress Scope of Work (Life Expectancy 0 years)	\$79,445,550
C	Complete Scope of Work (Life Expectancy 0 years)	\$0
		\$79,445,550



BAY D

Facility Summary

All cost estimates are in 2021 dollars and include total soft costs. Inflation values are based on priority assigned. Items marked as complete are shown with their final dollar value at time of completion.

Priority	Total Cost
Priority 1	\$0
Priority 2	\$4,600,518
Priority 3	\$0
Priority 4	\$0
Priority IP	\$0
Priority C	\$0
Total	\$4,600,518

Discipline	Priority 1	Priority 2	Priority 3	Priority 4	Priority IP	Priority C	Total Cost
Civil	\$0	\$0	\$0	\$0	\$0	\$0	\$0
Building Envelope	\$0	\$0	\$0	\$0	\$0	\$0	\$0
Architectural	\$0	\$4,600,518	\$0	\$0	\$0	\$0	\$4,600,518
Mechanical	\$0	\$0	\$0	\$0	\$0	\$0	\$0
Electrical	\$0	\$0	\$0	\$0	\$0	\$0	\$0
Plumbing	\$0	\$0	\$0	\$0	\$0	\$0	\$0
Technology	\$0	\$0	\$0	\$0	\$0	\$0	\$0
Fire & Life Safety	\$0	\$0	\$0	\$0	\$0	\$0	\$0
Security	\$0	\$0	\$0	\$0	\$0	\$0	\$0
Athletics/Activities	\$0	\$0	\$0	\$0	\$0	\$0	\$0
Nutrition Services	\$0	\$0	\$0	\$0	\$0	\$0	\$0
Other	\$0	\$0	\$0	\$0	\$0	\$0	\$0
Discipline Totals	\$0	\$4,600,518	\$0	\$0	\$0	\$0	\$4,600,518

P1 Total	\$0
P1 + P2 Total	\$4,600,518
P1 + P2 + P3 Total	\$4,600,518
P1 + P2 + P3 + P4 Total	\$4,600,518
In Progress (IP) Total	\$0
Complete (C) Total	\$0
IP + C Totals	\$0

BAY D

Proposed Work Items

All cost estimates are in 2021 dollars and include total soft costs. Inflation values are based on priority assigned. Items marked as complete are shown with their final dollar value at time of completion.

ITEM NO.	ITEM DESCRIPTION	PRIORITY CODE	SOURCE CODE	CLASSIFICATION CODE	TOTAL COST
ARCHITECTURE					\$4,600,518
5032	Bay "D" - Professional Learning Community Center.	2	PQ	ADD	\$4,600,518

PRIORITY CODE	PRIORITY DESCRIPTION	TOTAL
1	Must Do: Legal, Safety Reasons of Critical Replacements (Life Expectancy 1-5 years)	\$0
2	Should Do: Curricular, Instructional, Program Need - (Life Expectancy 6-15 years)	\$4,600,518
3	Would Like To Do: Curricular, Instructional, Program Enhancement (Life Expectancy 16-20 years)	\$0
4	Future Consideration (Life Expectancy 21-25 years)	\$0
IP	In Progress Scope of Work (Life Expectancy 0 years)	\$0
C	Complete Scope of Work (Life Expectancy 0 years)	\$0
		\$4,600,518